

GET FOREST SMART

PROFOR

Patti Kristjanson for:
Werner Kornexl
Manager, Program on Forests
The World Bank

FCPF Meeting Mar 28, 2018



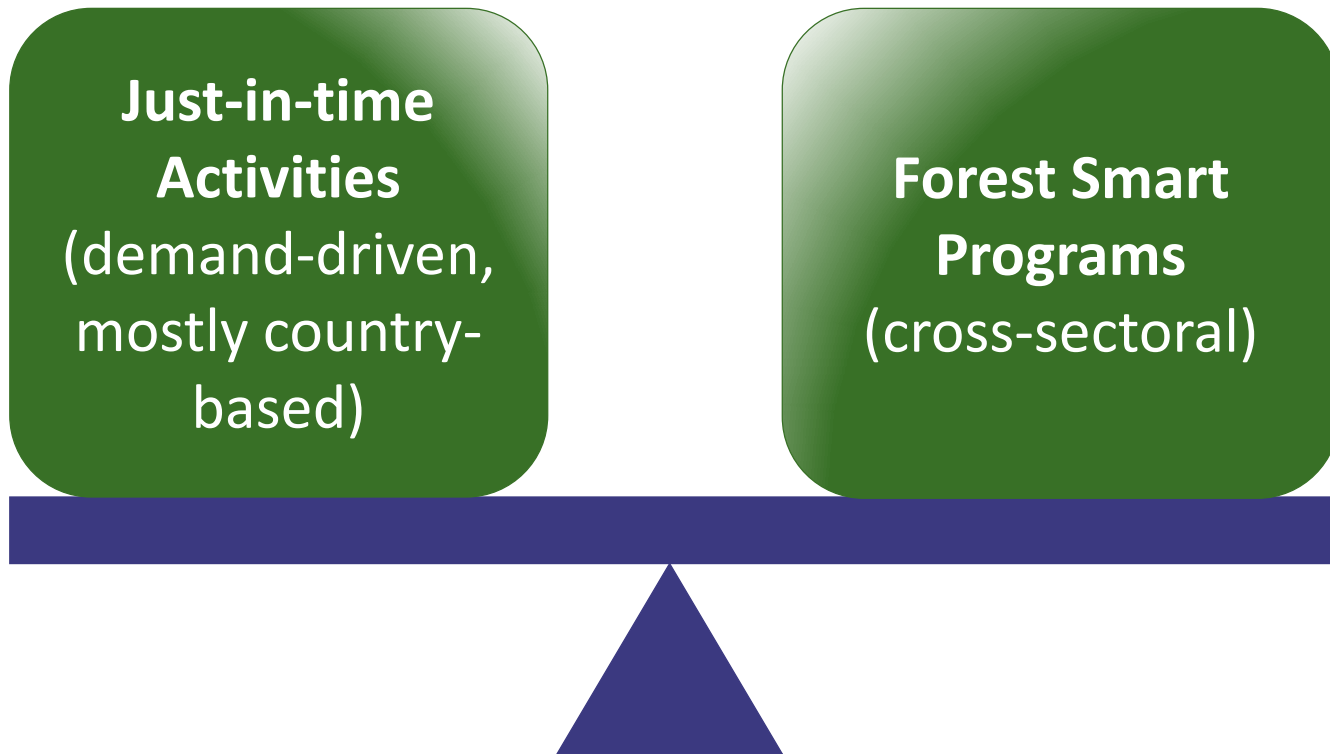
PROFOR

INNOVATION AND ACTION
FOR FORESTS



PROFOR ANALYTICS

Dual Approach:









FOREST SMART INTERVENTIONS

CHANGING MINDSETS IN AND BEYOND THE WORLD BANK

-  Agricultural Commodities
-  Disaster Risk Management
-  Mining
-  Energy
-  Gender
-  Forest Tenure
-  Trade and Competitiveness
-  Governance
-  Poverty



-  Macro Fiscal
-  Finance
-  Water
-  Transport

FOREST SMART INTERVENTION

AGRICULTURE



Agriculture



GLOBAL: Leveraging Agricultural Value Chains to Slow and Reverse Deforestation

- Expert knowledge on sustainable value chain initiatives for soy, palm oil, beef, shea, and coffee.
- Assessment of WB investments in sustainable value chains and trees on farms.
- Recommendations for scaling up investments in sustainable value chains and trees on farms.

MEXICO: National Land Use Programs



- PROFOR supports review efficiency of agricultural and environmental land use programs.
- Findings facilitated agreement between the Ministries of Environment and Agriculture to improve government programs
- Facilitated agreement between Ministry of Agriculture and National Forestry Commission on livestock and PES programs.



FOREST SMART INTERVENTION

INDONESIA: SUSTAINABLE GEOTHERMAL POWER DEVELOPMENT IN FOREST AREAS



Energy

- **GEOTHERMAL AND FORESTS:** Govt. of Indonesia set target of 7,200 MW of geothermal capacity by 2025.
- WB convened key stakeholders in Indonesia, including ministries and geothermal power developers, and agreed on regulation on access to forests and forest conservation.
- PROFOR tested Min. of Environment & Forestry's regulations on the ground to advise on best practices, social and environmental risks, benefit-sharing mechanisms, offsets, etc.



FOREST SMART INTERVENTION COUNTRY EXAMPLES



Disaster Risk Management

Jamaica

- PROFOR is supporting the Government to analyze and promote cost-effective coastal protection measures.
- Enhancing mangrove ecosystems will contribute to climate change adaptation and disaster risk reduction in coastal areas.



Mozambique

- One of the first nature-based urban flood management projects supported by the WBG was in the coastal city of Beira.
- PROFOR is taking best practices for urban flood risk management based on Beira to other cities in Mozambique,
- **This is leading to new investment lending operations.**

Vietnam

- PROFOR is supporting the development of an integrated vision for forests and coastal zone protection, based on ecosystem services for sustainable development, livelihoods and growth



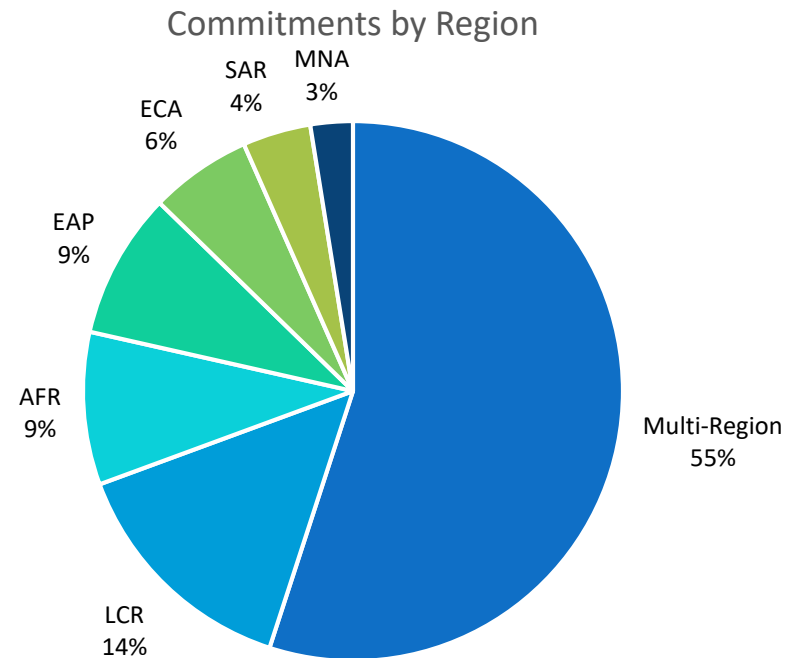


PROFOR BY THE NUMBERS

IMPACT from 2012-2017:

Influenced **71** World Bank Operations and **18** National Policy Programs

US\$ **1** leveraged and influenced US\$ **70** in investments



GOING FORWARD: MORE FOCUS ON FOREST RESTORATION



CHINA: INCREASING FOREST STOCK

- Best practices to help China increase forest stocks by 4.5 billion cubic meters by 2030 (NDC target) in a more biodiverse and socially inclusive way
- Recommendations are encouraging a more inclusive, biodiverse and resilient reforestation program.
- PROFOR study will inform US\$ 150m forest restoration operation

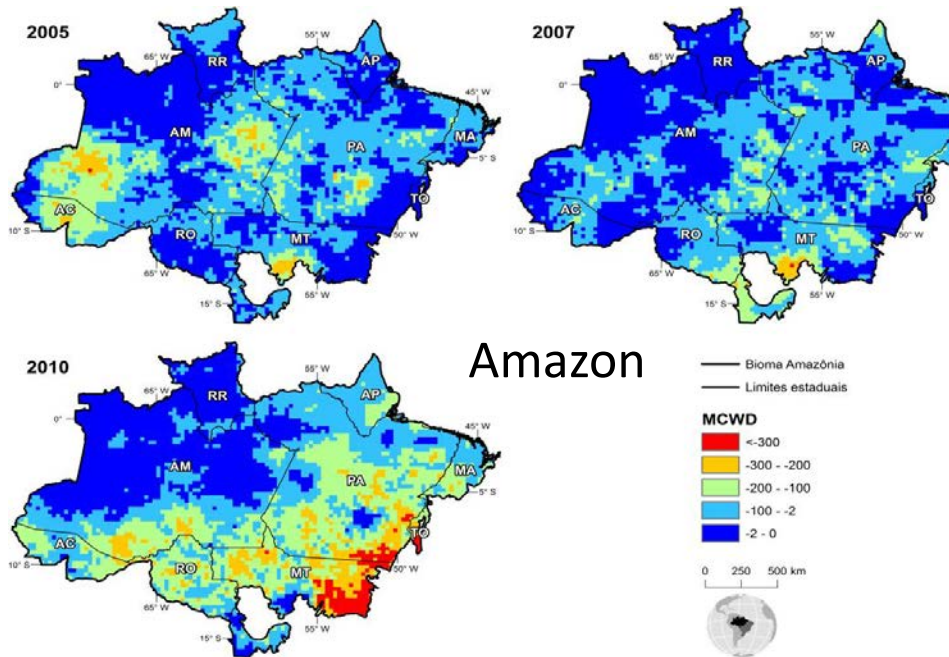


BRAZIL: SCALING UP NATIVE SPECIES PLANTATIONS IN SAO PAULO

- Economic viability analysis and market assessment for potential wood products.
- National Gap Knowledge Assessment
- Results informed a national applied research fund to advance Brazil's 12 million ha restoration target.
- PROFOR informs Agri Pro Clima forest restoration project – US\$ 110m



AND: RESILIENCE AND TIPPING POINTS



1. **The southern Amazon is on the verge of a drastic tipping point**, beyond which the extent of the areas burned in drought years may double
2. **A 1oC increase relative to the 2010-2015 average temperature could trigger a cascade of large forest fires** during the most severe droughts in the region.
3. **Local droughts** will be the main determinant of the future Amazonian forest fire regimes with increasing forest fragmentation playing a secondary role in facilitating the spread of fire. This points to a **virtually catastrophic effect of climate change-driven droughts after 2030**, irrespective of on-going GHG emissions mitigation efforts.



COUNTRY SNAPSHOTS

INDONESIA

Analysis of development options for the lowlands – fire, subsidence and inundations

COLOMBIA

Help define model for reforestation by developing commercially planted forests.

VIETNAM

Support the Government of Vietnam to implement country's 2006 – 2020 Forestry Development Strategy.

MOZAMBIQUE/MADAGASCAR

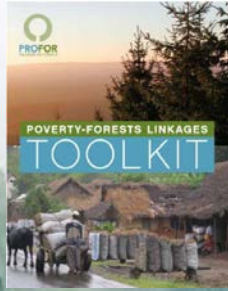
Help build capacity for forest landscape planning at the national and sub-national levels.

BRAZIL

Advance REDD+ goals: Re-establish and scale up forest plantations; inclusion of indigenous peoples through benefit sharing mechanisms.

REPUBLIC OF CONGO (ROC)

Inform investments in the forest, agriculture, and mining sectors.



Forest Tool Kid



WIKOGEEK

BENEFIT SHARING MECHANISM TOOLKIT

What it does: Builds capacity of FCPF countries to establish equitable benefit-sharing mechanisms in forest sector, leading to more successful implementation of REDD+ programs, including sustainable forest management and forest restoration.

Impact: Enabled countries to meet benefit sharing requirements of applying to the Carbon fund and increase efficiency of implementing REDD+ programs.



Examples:

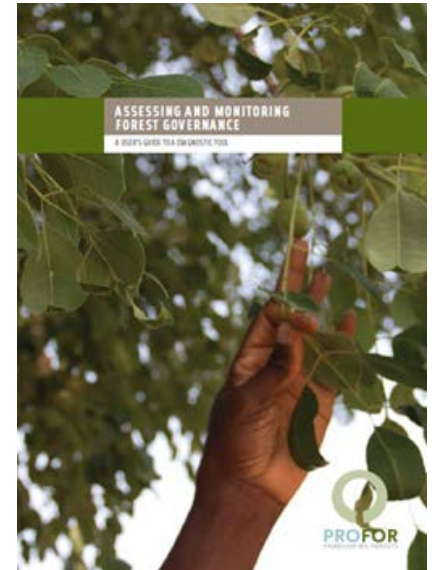
- ✓ Mexico: Contributed to broader engagement on REDD+ amongst state and national stakeholders on minimizing and avoiding deforestation and forest degradation caused by agriculture.
- ✓ Brazil: Currently providing capacity building to federal and local stakeholders in the Brazil Amazon, especially the inclusion of indigenous peoples, to support its National REDD+ strategy.



FOREST GOVERNANCE DIAGNOSTIC TOOL

What it does: Equips FCPF countries with mechanism to establish forest governance baseline and identify gaps in the sustainable management of forest resources, while building consensus among various stakeholders.

Impact: Enabled countries to formulate more robust REDD+ preparation plans to include multi-faceted governance data.



Examples:

- ✓ Applied in at least 10 countries
- ✓ Burkina Faso and Liberia used tool to develop system of carbon sequestration and payments.
- ✓ Liberia used the tool to develop country's REDD+ plan and monitoring framework.
- ✓ Mozambique used the tool at a subnational level to inform Forest Investment Program.

GET FOREST SMART

WWW.PROFOR.INFO



PROFOR

INNOVATION AND ACTION
FOR FORESTS



ukaid